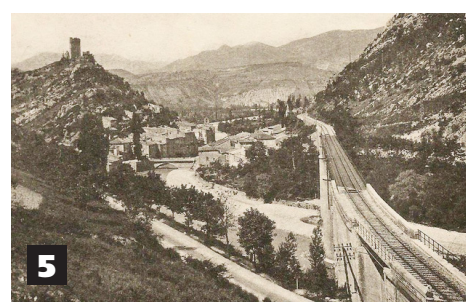
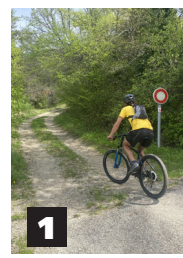
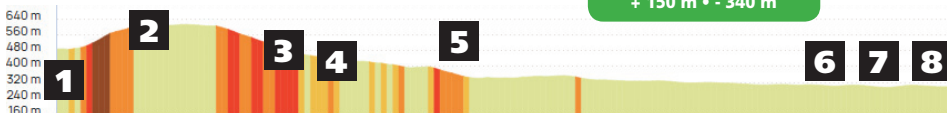
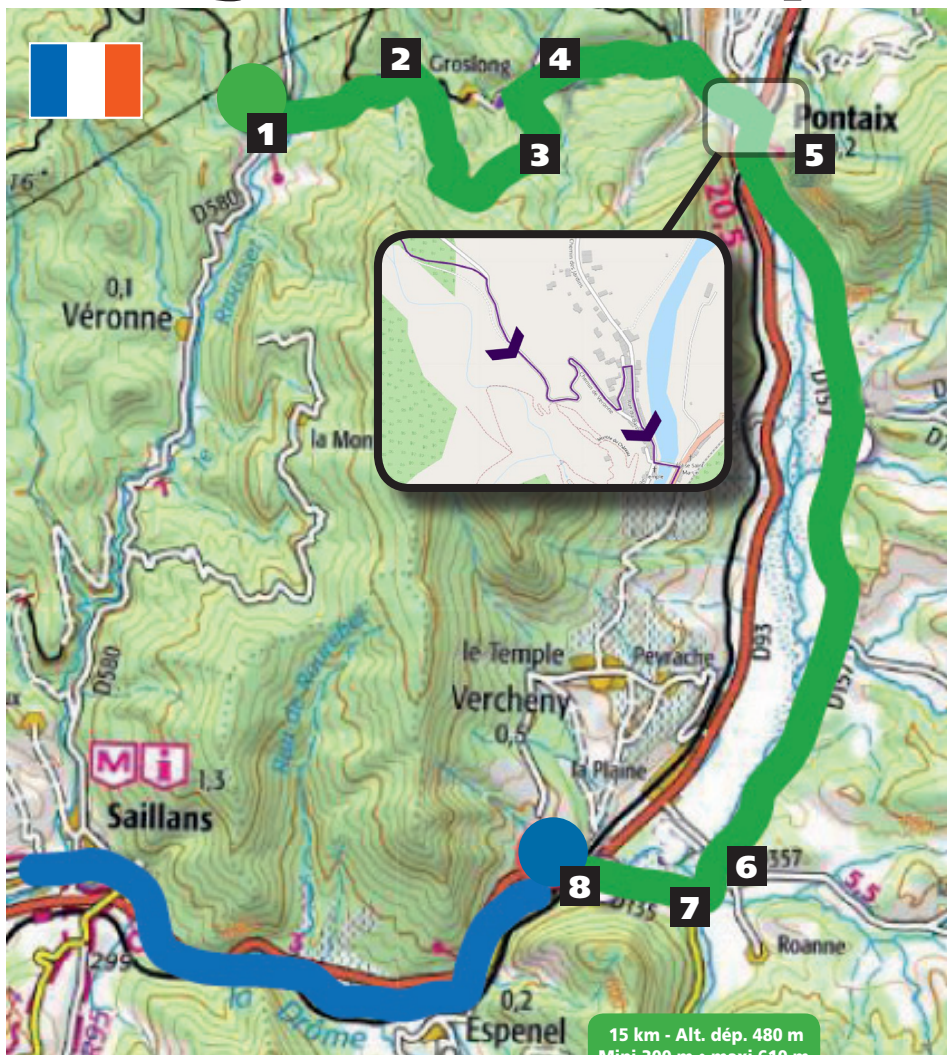


Biking Véronne > Espenel

3



1 Beginning of the trail a bit hard (+100m) as it starts with a fairly steep but relatively short climb. after about 800 m you will reach the Col de Véronne, the highest point of your trail **2** (enjoy the beautiful view of the Vercors), turn right and from here you will go through a succession of downhills and slight uphill portions until you've reached Pontaix (5km) **5**.

The castle of Pontaix is an old fortified castle that traced back to 1215, today, only the ruins remain. Back in the medieval times, the castle and its keep controlled a narrow passage of the Drôme Valley and played an important role during the wars of religions. The castle was destroyed at the end of the 16th century.

Once in Pontaix, go across the village, the Drôme river and the main road at the bottom of the valley, to take the D157 road that you will find behind the restaurant.

The road now meanders between hamlets and the Clairette de Die wine estates.

The Clairette de Die is a sweet sparkling wine with a strong aroma of Muscat. Quoted by Pliny the Elder, in the year 77, in his book «Natural History», it finally became known nationally at the end of the 19th century thanks to the opening up of the region.

At the various crossroads follow the **DIRECTION : ESPENEL, SAILLANS**

Once you have passed under the railway bridge **8**, you will find our boarding spot where we will give you your canoe for your way back to Saillans.